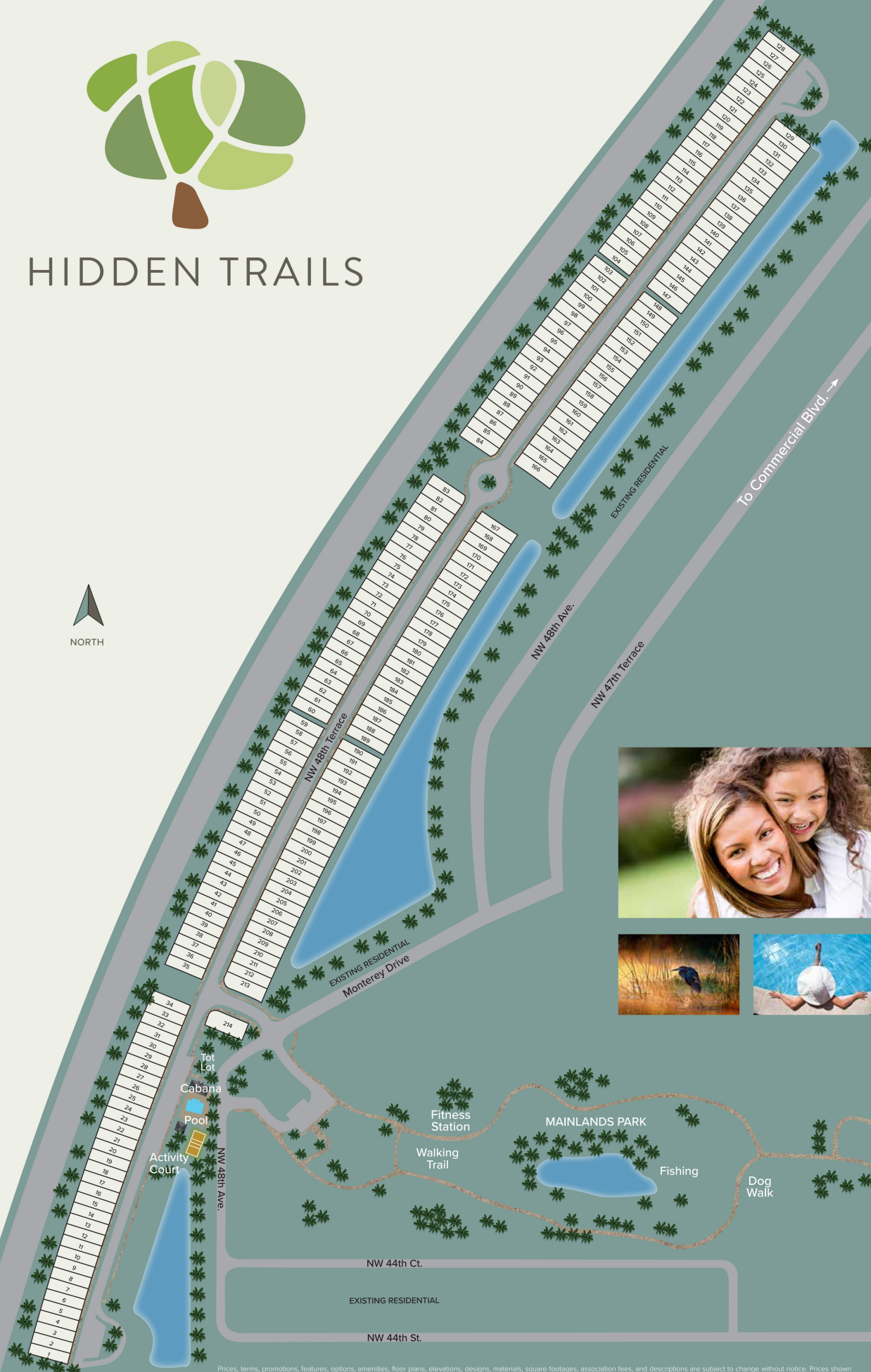




HIDDEN TRAILS



Prices, terms, promotions, features, options, amenities, floor plans, elevations, designs, materials, square footages, association fees, and descriptions are subject to change without notice. Prices shown refer to the base house and do not include any optional features, upgrades, lot premiums, upgrade exterior elevations, or association fees. Square footages are approximate and may vary in construction depending on the standard measurement used. 13th Floor Homes, Palm Cove Holding, LP, its affiliates and advisors reserves the right to make changes to its home designs. Any energy savings, community or neighborhood benefits, features, description, open spaces, views, conservation areas, golf course, and school information are not guaranteed, are subject to change, or modified at any time.

THE
ASHBY

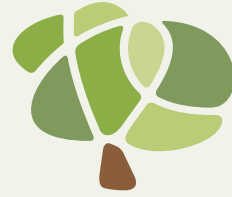
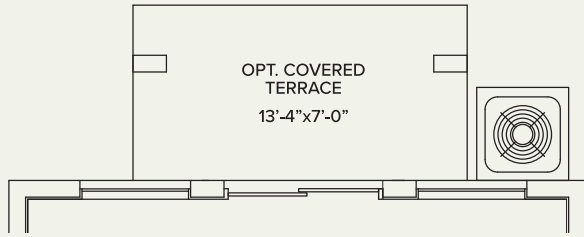
3 Bedrooms | 2.5 Bathrooms | 1 Car Garage

Living A/C Area: 1,558 sq. ft.

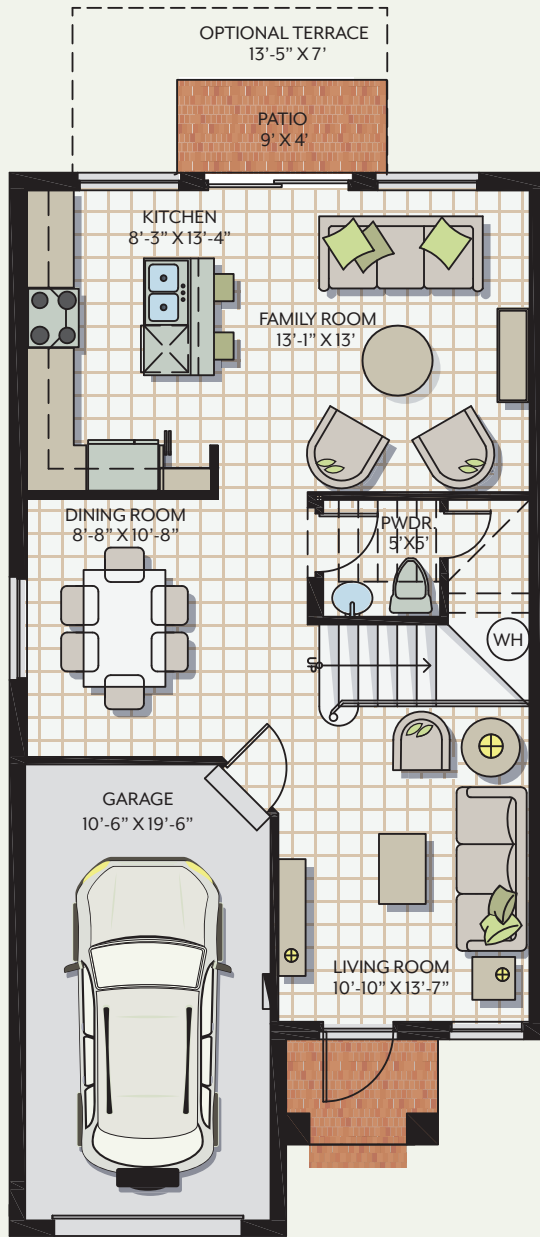
Total Under Roof: 1,815 sq. ft.



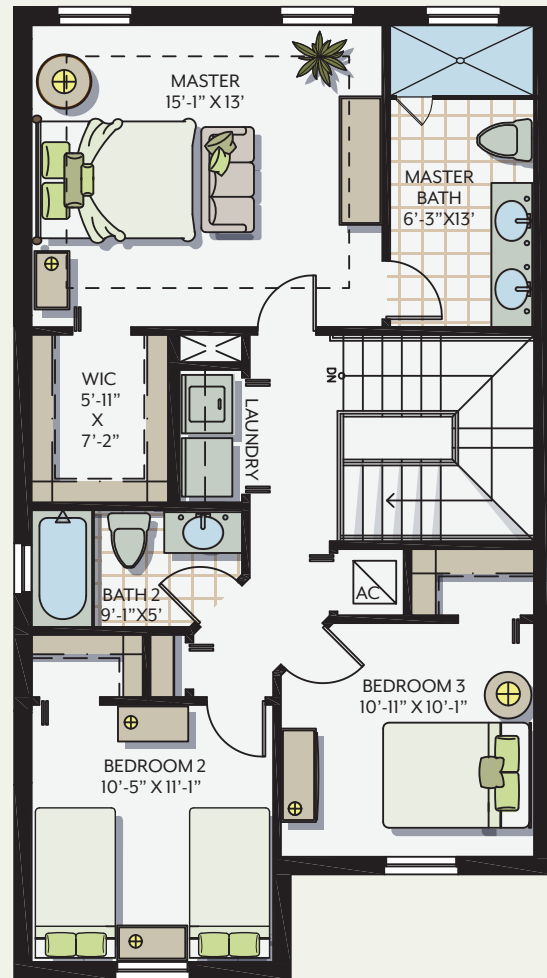
HIDDEN



HIDDEN



First Floor



Second Floor



Prices, terms, promotions, features, options, amenities, floor plans, elevations, designs, materials, square footages, association fees, and descriptions are subject to change without notice. Prices shown refer to the base house and do not include any optional features, upgrades, lot premiums, upgrade exterior elevations, or association fees. Square footages are approximate and may vary in construction depending on the standard measurement used. 13th Floor Homes, Palm Cove Holding, LP., its affiliates and advisors reserves the right to make changes to its home designs. Any energy savings, community or neighborhood benefits, features, description, open spaces, views, conservation areas, golf course, and school information are not guaranteed, are subject to change, or modified at any time.

THE
BIRCHWOOD

3 Bedrooms | 2.5 Bathrooms | 1.5 Car Garage

Living A/C Area: 1,778 sq. ft.

Total Under Roof: 2,154 sq. ft.



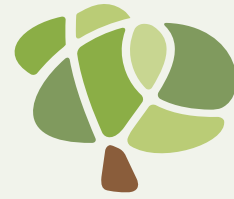
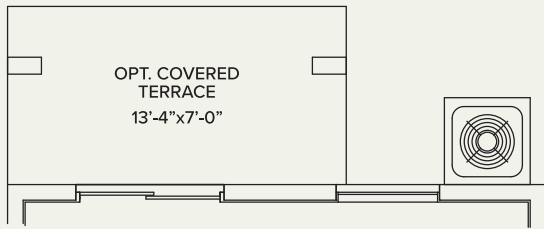
Elevation A



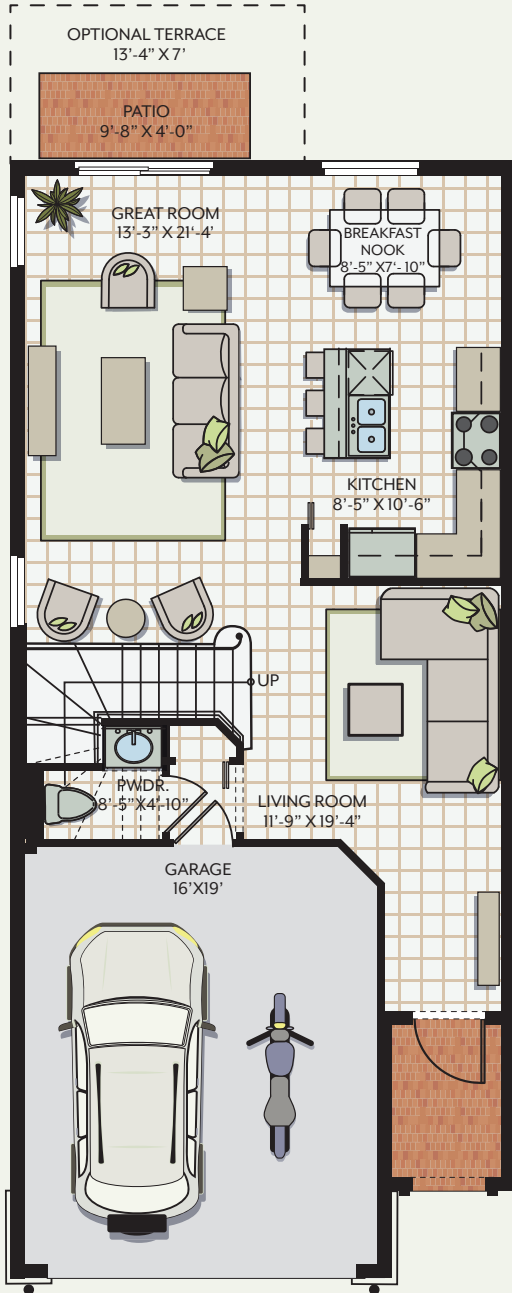
Elevation B



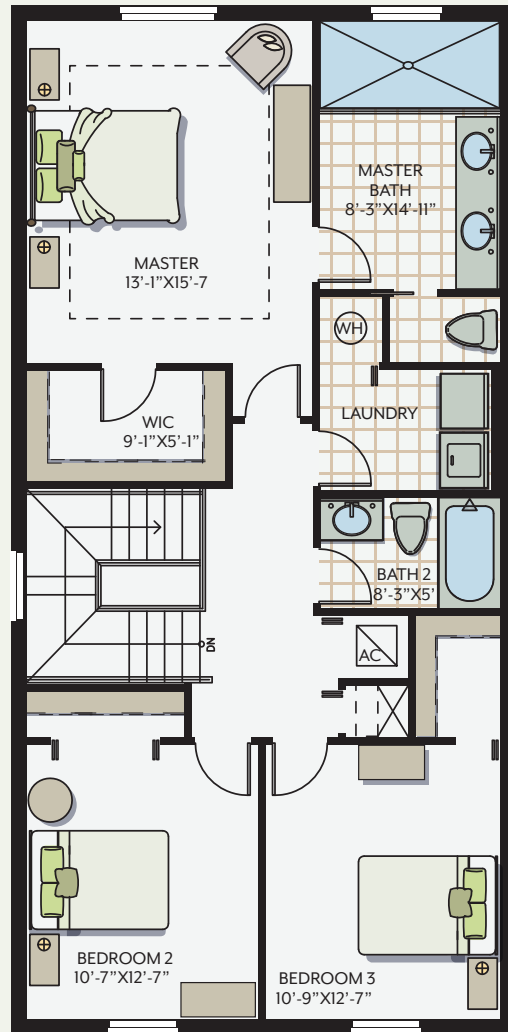
HIDDEN



HIDDEN



First Floor



Second Floor



Prices, terms, promotions, features, options, amenities, floor plans, elevations, designs, materials, square footages, association fees, and descriptions are subject to change without notice. Prices shown refer to the base house and do not include any optional features, upgrades, lot premiums, upgrade exterior elevations, or association fees. Square footages are approximate and may vary in construction depending on the standard measurement used. 13th Floor Homes, Palm Cove Holding, LP., its affiliates and advisors reserves the right to make changes to its home designs. Any energy savings, community or neighborhood benefits, features, description, open spaces, views, conservation areas, golf course, and school information are not guaranteed, are subject to change, or modified at any time.

THE
CYPRESS

4 Bedrooms | 2.5 Bathrooms | 2 Car Garage

Living A/C Area: 1,818 sq. ft.

Total Under Roof: 2,295 sq. ft.



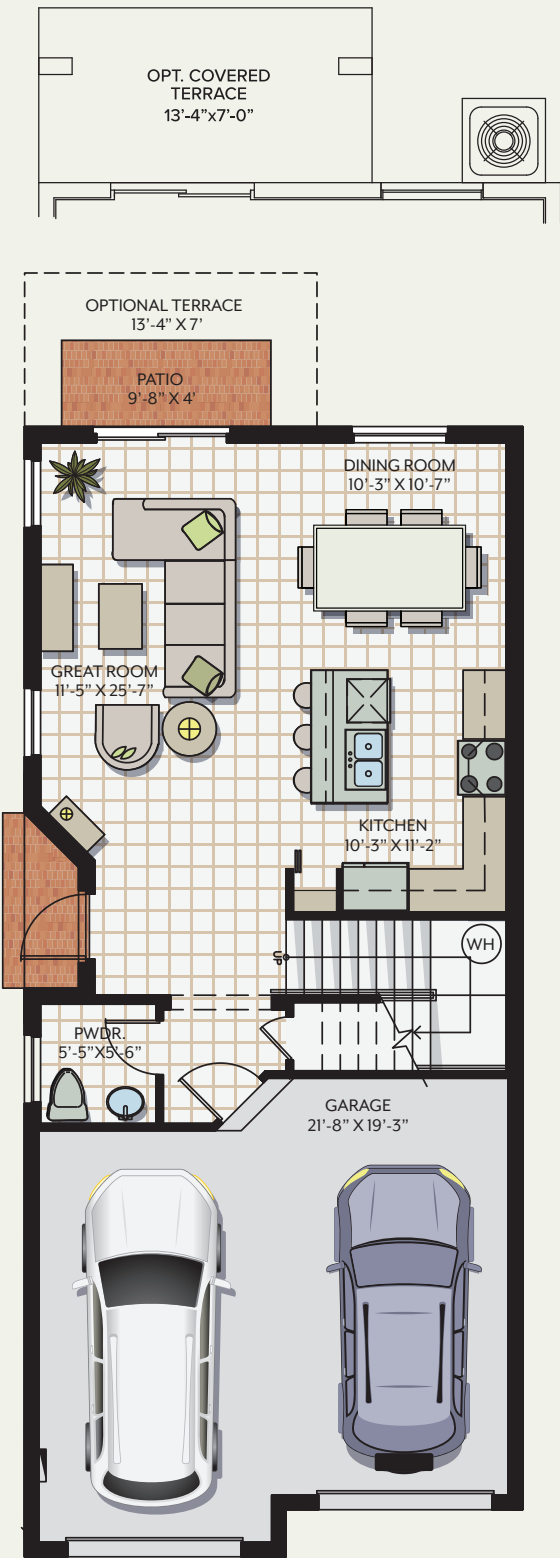
Elevation A



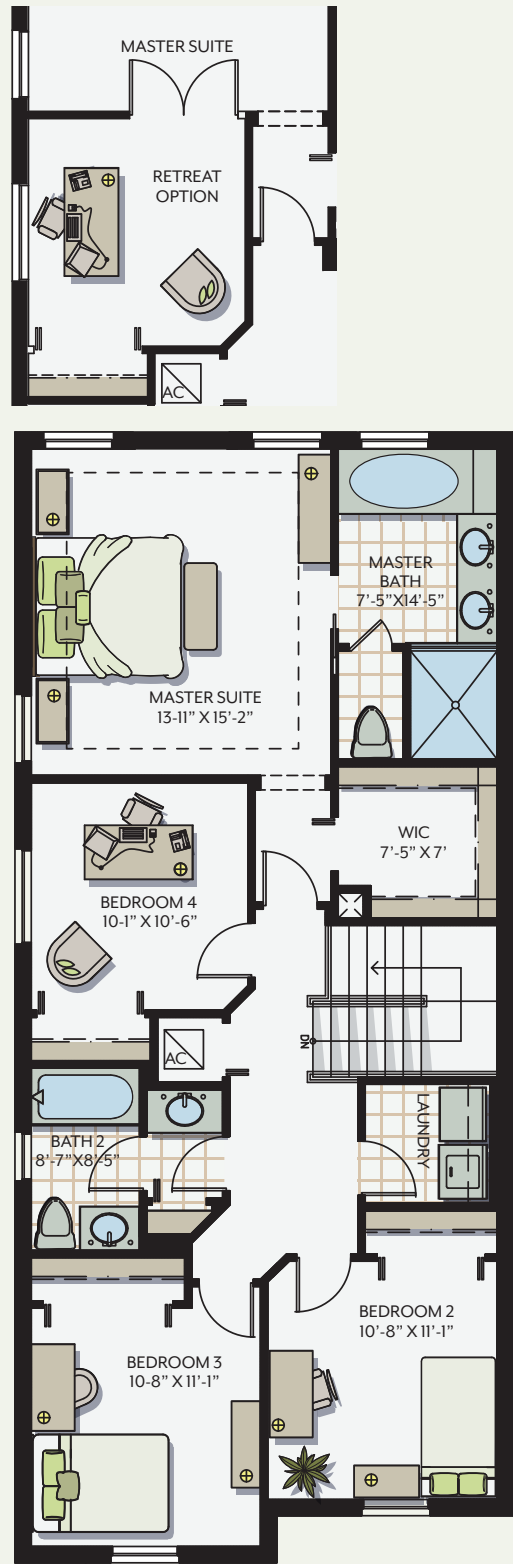
Elevation B



HIDDEN



First Floor



Second Floor



Prices, terms, promotions, features, options, amenities, floor plans, elevations, designs, materials, square footages, association fees, and descriptions are subject to change without notice. Prices shown refer to the base house and do not include any optional features, upgrades, lot premiums, upgrade exterior elevations, or association fees. Square footages are approximate and may vary in construction depending on the standard measurement used. 13th Floor Homes, Palm Cove Holding, LP., its affiliates and advisors reserves the right to make changes to its home designs. Any energy savings, community or neighborhood benefits, features, description, open spaces, views, conservation areas, golf course, and school information are not guaranteed, are subject to change, or modified at any time.

THE
DUVAL

4 Bedrooms | 2.5 Bathrooms | 1 Car Garage

Living A/C Area: 2,067 sq. ft.

Total Under Roof: 2,320 sq. ft.



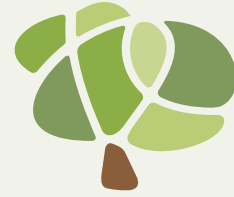
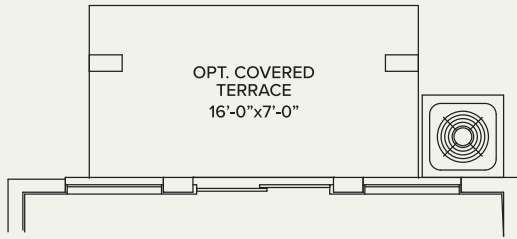
Elevation A



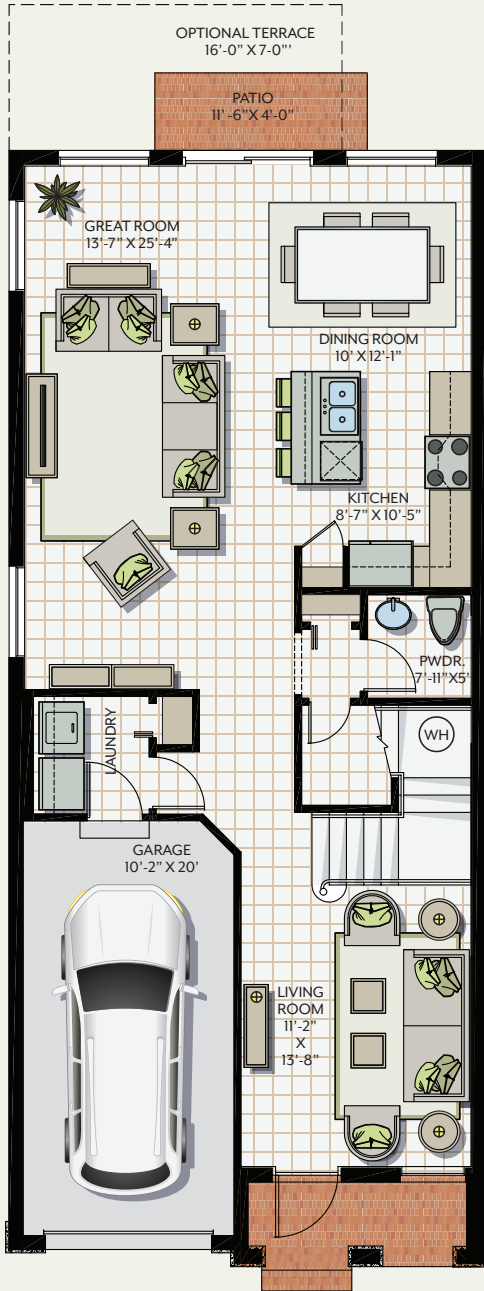
Elevation B



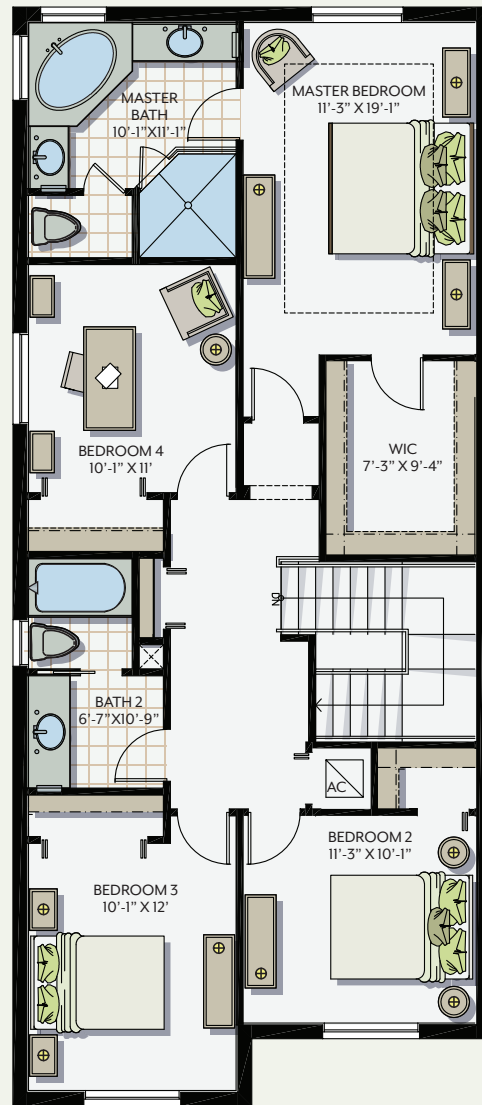
HIDDEN



HIDDEN



First Floor



Second Floor



Prices, terms, promotions, features, options, amenities, floor plans, elevations, designs, materials, square footages, association fees, and descriptions are subject to change without notice. Prices shown refer to the base house and do not include any optional features, upgrades, lot premiums, upgrade exterior elevations, or association fees. Square footages are approximate and may vary in construction depending on the standard measurement used. 13th Floor Homes, Palm Cove Holding, LP., its affiliates and advisors reserves the right to make changes to its home designs. Any energy savings, community or neighborhood benefits, features, description, open spaces, views, conservation areas, golf course, and school information are not guaranteed, are subject to change, or modified at any time.

THE
HAMMOCK

4 Bedrooms | 2.5 Bathrooms | 2 Car Garage

Living A/C Area: 1,984 sq. ft.

Total Under Roof: 2,453 sq. ft.



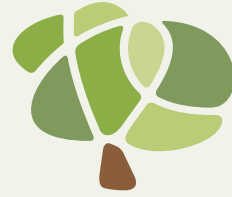
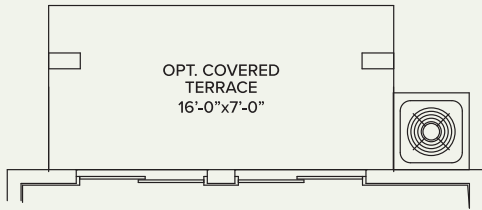
Elevation A



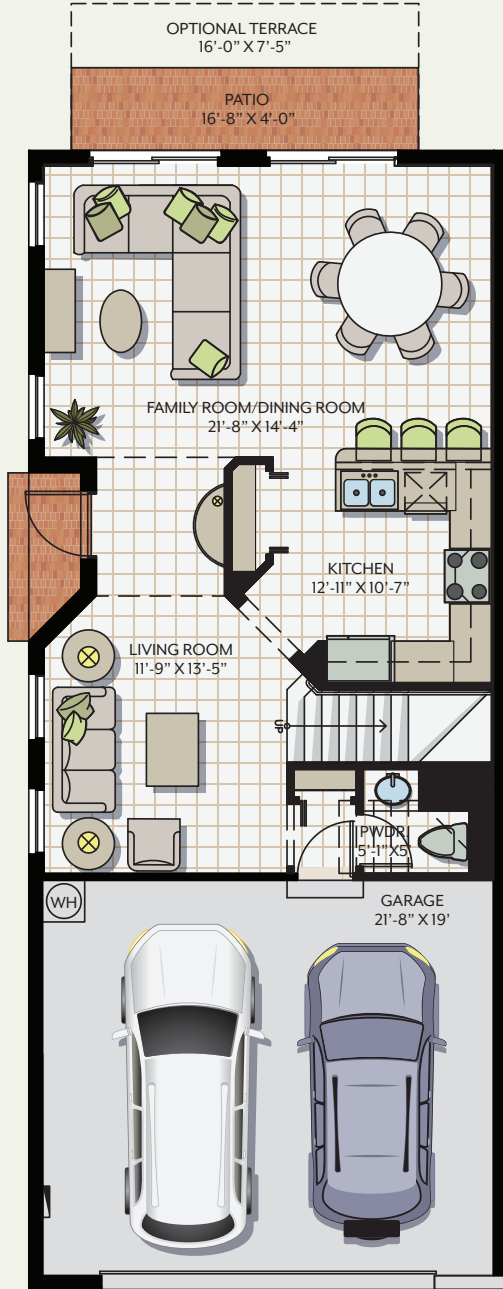
Elevation B



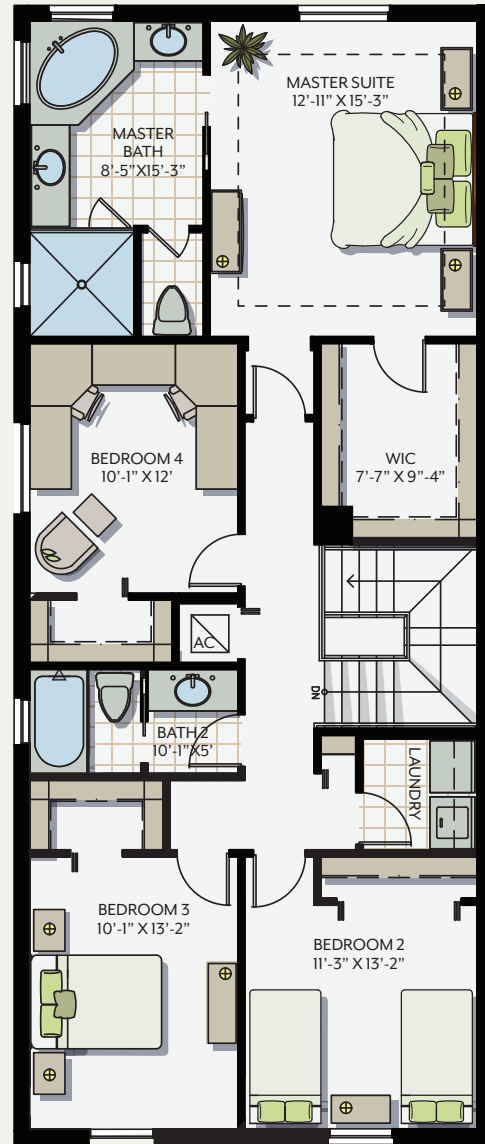
HIDDEN



HIDDEN



First Floor



Second Floor



Prices, terms, promotions, features, options, amenities, floor plans, elevations, designs, materials, square footages, association fees, and descriptions are subject to change without notice. Prices shown refer to the base house and do not include any optional features, upgrades, lot premiums, upgrade exterior elevations, or association fees. Square footages are approximate and may vary in construction depending on the standard measurement used. 13th Floor Homes, Palm Cove Holding, LP., its affiliates and advisors reserves the right to make changes to its home designs. Any energy savings, community or neighborhood benefits, features, description, open spaces, views, conservation areas, golf course, and school information are not guaranteed, are subject to change, or modified at any time.

THE
PEARY

4 Bedrooms | 3.5 Bathrooms | 1 Car Garage

Living A/C Area: 2,086 sq. ft.

Total Under Roof: 2,348 sq. ft.



Elevation A



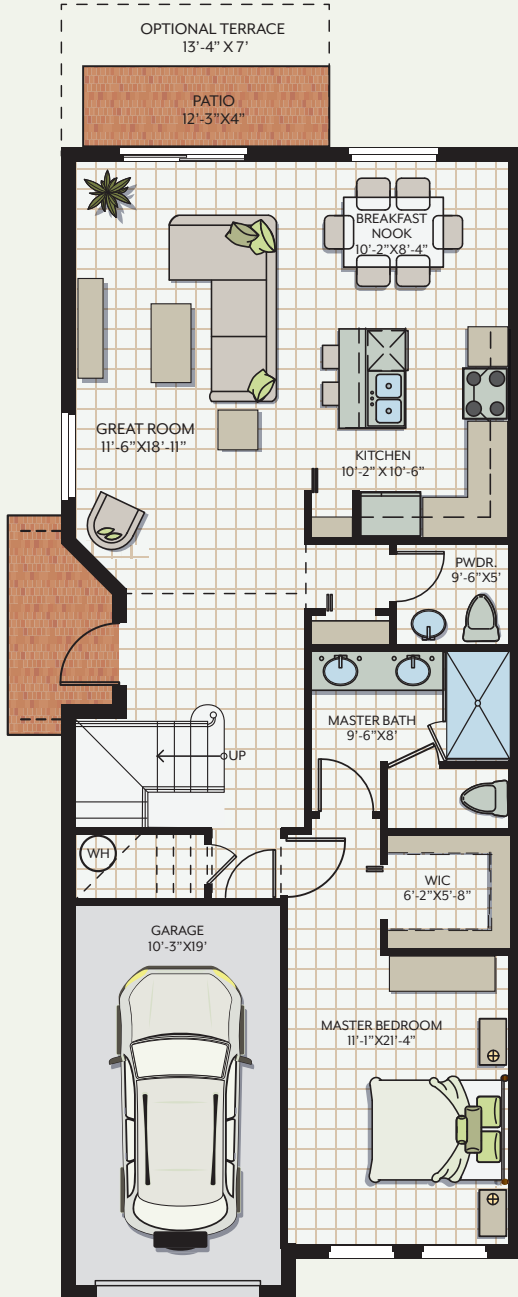
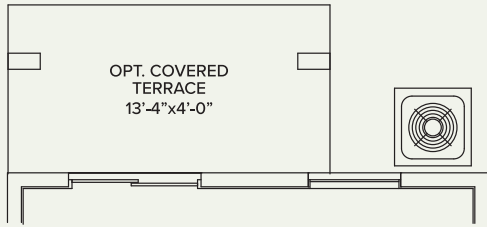
Elevation B



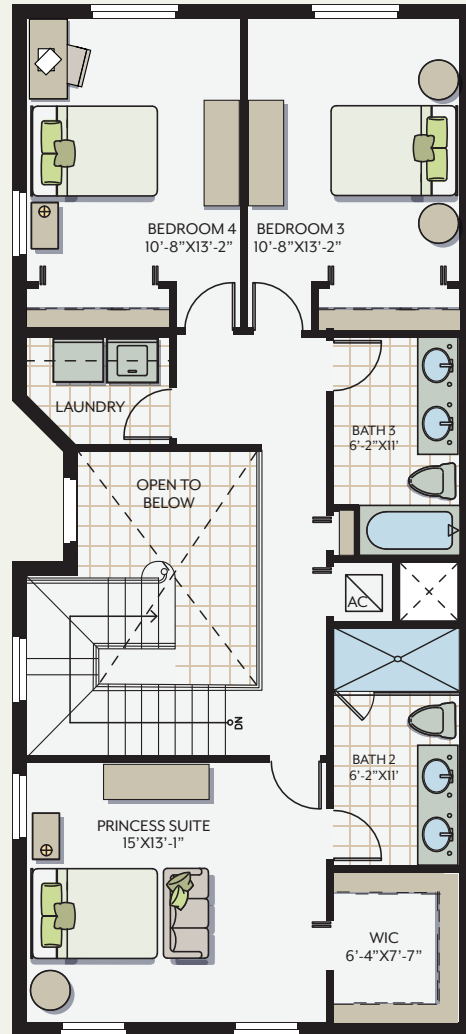
HIDDEN



HIDDEN



First Floor



Second Floor



Prices, terms, promotions, features, options, amenities, floor plans, elevations, designs, materials, square footages, association fees, and descriptions are subject to change without notice. Prices shown refer to the base house and do not include any optional features, upgrades, lot premiums, upgrade exterior elevations, or association fees. Square footages are approximate and may vary in construction depending on the standard measurement used. 13th Floor Homes, Palm Cove Holding, LP., its affiliates and advisors reserves the right to make changes to its home designs. Any energy savings, community or neighborhood benefits, features, description, open spaces, views, conservation areas, golf course, and school information are not guaranteed, are subject to change, or modified at any time.



HIDDEN

Ashby

3 Bedrooms, 2.5 Baths, 1 Car Garage

1,558 A/C
1,815 Total

from

\$291,990

Birchwood

3 Bedrooms, 2.5 Baths, 1.5 Car Garage

1,778 A/C
2,154 Total

from

\$310,990

Cypress

4 Bedrooms, 2.5 Baths, 2 Car Garage

1,818 A/C
2,295 Total

from

\$331,990

Duval

4 Bedrooms, 2.5 Baths, 1 Car Garage

2,067 A/C
2,320 Total

from

\$337,990

Hammock

4 Bedrooms, 2.5 Baths, 2 Car Garage

1,984 A/C
2,453 Total

from

\$341,990

Peary

4 Bedrooms, 3.5 Baths, 1 Car Garage

2,086 A/C
2,348 Total

from

\$351,990

Prices, terms, promotions, features, options, amenities, floor plans, elevations, designs, materials, square footages, association fees, and descriptions are subject to change without notice. Prices shown refer to the base house and do not include any optional features, upgrades, lot premiums, upgrade exterior elevations, or association fees. Square footages are approximate and may vary in construction depending on the standard measurement used. 13th Floor Homes, Palm Cove Holding, LP, its affiliates and advisors reserves the right to make changes to its home designs. Any energy savings, community or neighborhood benefits, features, description, open spaces, views, conservation areas, golf course, and school information are not guaranteed, are subject to change, or modified at any time.



Price List as 1/2/2018



HIDDEN TRAILS

Ashby

3 Bedrooms, 2.5 Baths, 1 Car Garage

1,558 A/C
1,815 Total

from

\$299,000

Birchwood

3 Bedrooms, 2.5 Baths, 1.5 Car Garage

1,778 A/C
2,154 Total

from

\$321,000

Cypress

4 Bedrooms, 2.5 Baths, 2 Car Garage

1,818 A/C
2,295 Total

from

\$341,000

Duval

4 Bedrooms, 2.5 Baths, 1 Car Garage

2,067 A/C
2,320 Total

from

\$348,000

Hammock

4 Bedrooms, 2.5 Baths, 2 Car Garage

1,984 A/C
2,453 Total

from

\$352,000

Peary

4 Bedrooms, 3.5 Baths, 1 Car Garage

2,086 A/C
2,348 Total

from

\$362,000

954.556.6754 | 13thFloorHomes.com/HiddenTrails
4893 NW 55th Place Tamarac, FL 33319

Specific Home sites may have additional premiums.
See your New Home Consultant for additional information.
Effective:11/29/17

Prices, terms, promotions, features, options, amenities, floor plans, elevations, designs, materials, square footages, association fees, and descriptions are subject to change without notice. Prices shown refer to the base house and do not include any optional features, upgrades, lot premiums, upgrade exterior elevations, or association fees. Square footages are approximate and may vary in construction depending on the standard measurement used. 13th Floor Homes, Palm Cove Holding, LP, its affiliates and advisors reserves the right to make changes to its home designs. Any energy savings, community or neighborhood benefits, features, description, open spaces, views, conservation areas, golf course, and school information are not guaranteed, are subject to change, or modified at any time.

