

Village Collection

Amelia 3 Bedrooms, 2.5 Baths Living Room, Family Room, 1 Car Garage	1,558 A/C 1,815 Total	From	\$278,900
Bristow 3 Bedrooms, 2.5 Baths Living Room, Family Room, 1.5 Car Garage	1,778 A/C 2,158 Total	From	\$299,900
Costa 4 Bedrooms, 2.5 Baths Living Room, Family Room, 2 Car Garage	1,818 A/C 2,295 Total	From	\$321,900
Hampton 4 Bedrooms, 2.5 Baths Living Room, Family Room, 1 Car Garage	2,067 A/C 2,320 Total	From	\$324,900
Pacific 4 Bedrooms, 2.5 Baths Living Room, Family Room, 2 Car Garage	1,984 A/C 2,453 Total	From	\$332,900
Seaside 4 Bedrooms, 3.5 Baths Living Room, Family Room, 1 Car Garage	2,086 A/C 2,348 Total	From	\$336,900

Prices, terms, promotions, features, options, amenities, floor plans, elevations, designs, materials, square footages, association fees, and descriptions are subject to change without notice. Prices shown refer to the base house and do not include any optional features, upgrades, lot premiums, upgrade exterior elevations, or association fees. Square footages are approximate and may vary in construction depending on the standard measurement used. 13th Floor Homes, its affiliates and advisors reserve the right to make changes to its home designs. Any energy savings, community or neighborhood benefits, features, description, open spaces, views, conservation areas, and school information are not guaranteed, are subject to change, or be modified at any time.

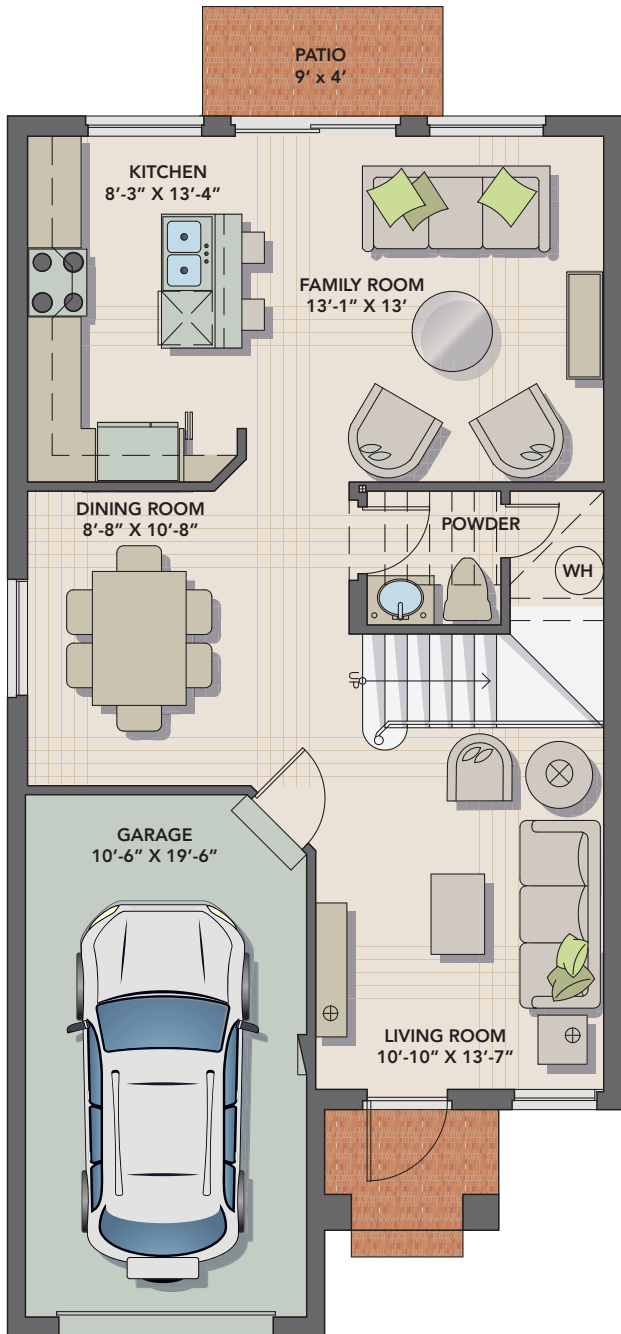
THE AMELIA

3 Bedrooms | 2.5 Baths | 1-Car Garage
1,558 A/C sq. ft. • 1,815 Total sq. ft.

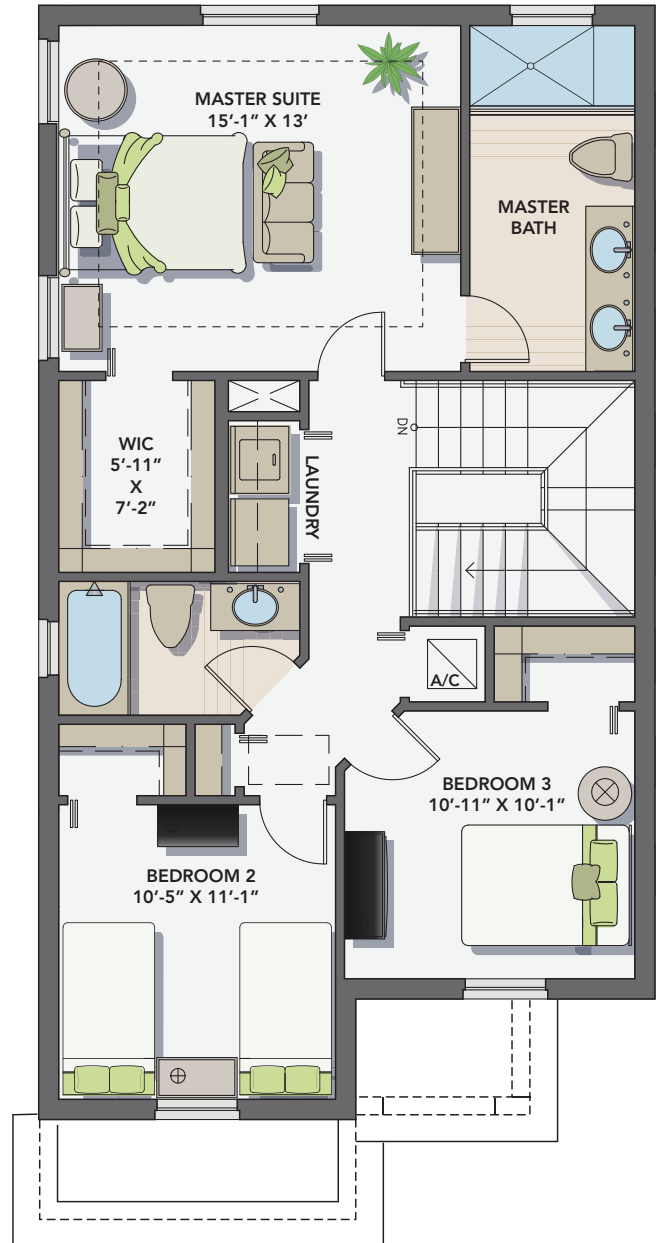


THE AMELIA

3 Bedrooms | 2.5 Baths | 1-Car Garage
1,558 A/C sq. ft. • 1,815 Total sq. ft.



First Floor



Second Floor

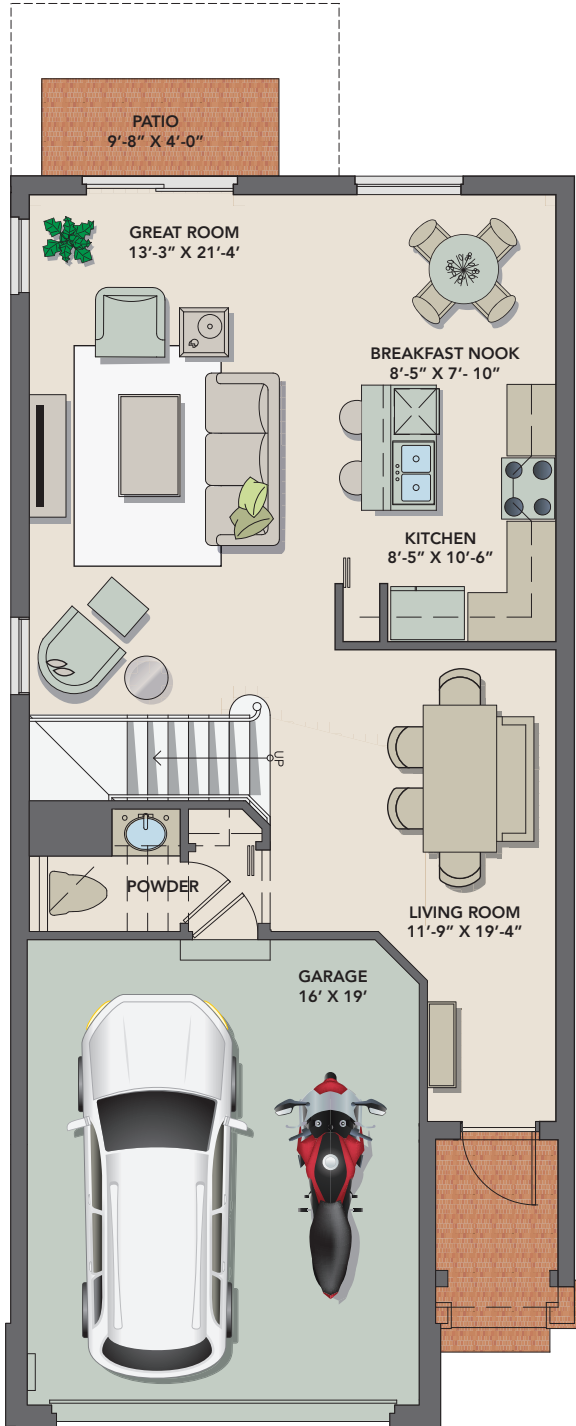
**THE
BRISTOW**

3 Bedrooms | 2.5 Baths | 1.5-Car Garage
1,778 A/C sq. ft. • 2,158 Total sq. ft.

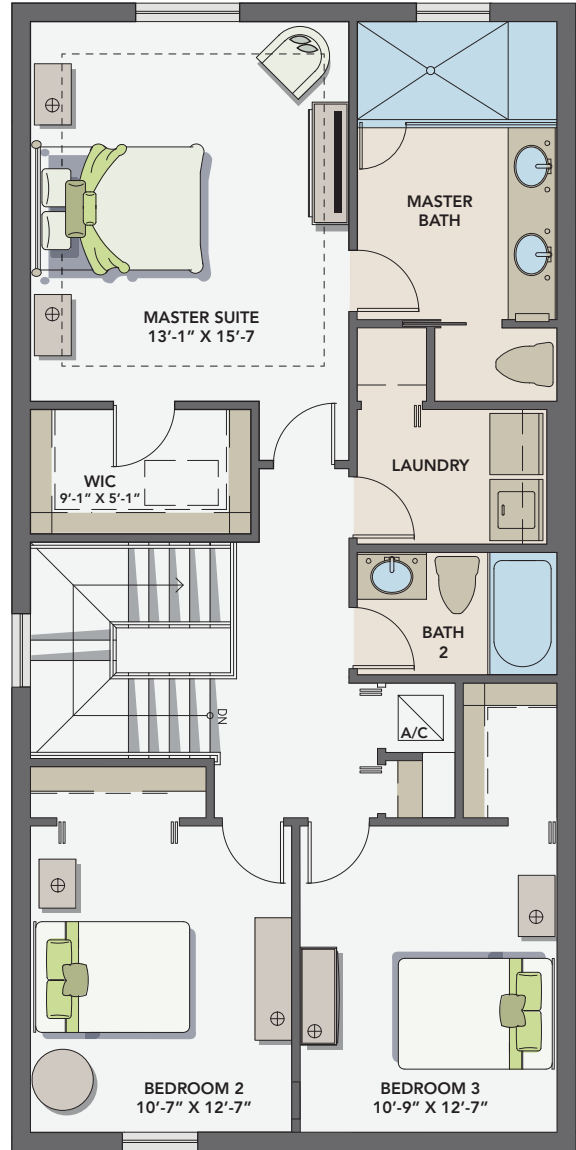


THE BRISTOW

3 Bedrooms | 2.5 Baths | 1.5-Car Garage
1,778 A/C sq. ft. • 2,158 Total sq. ft.



First Floor



Second Floor

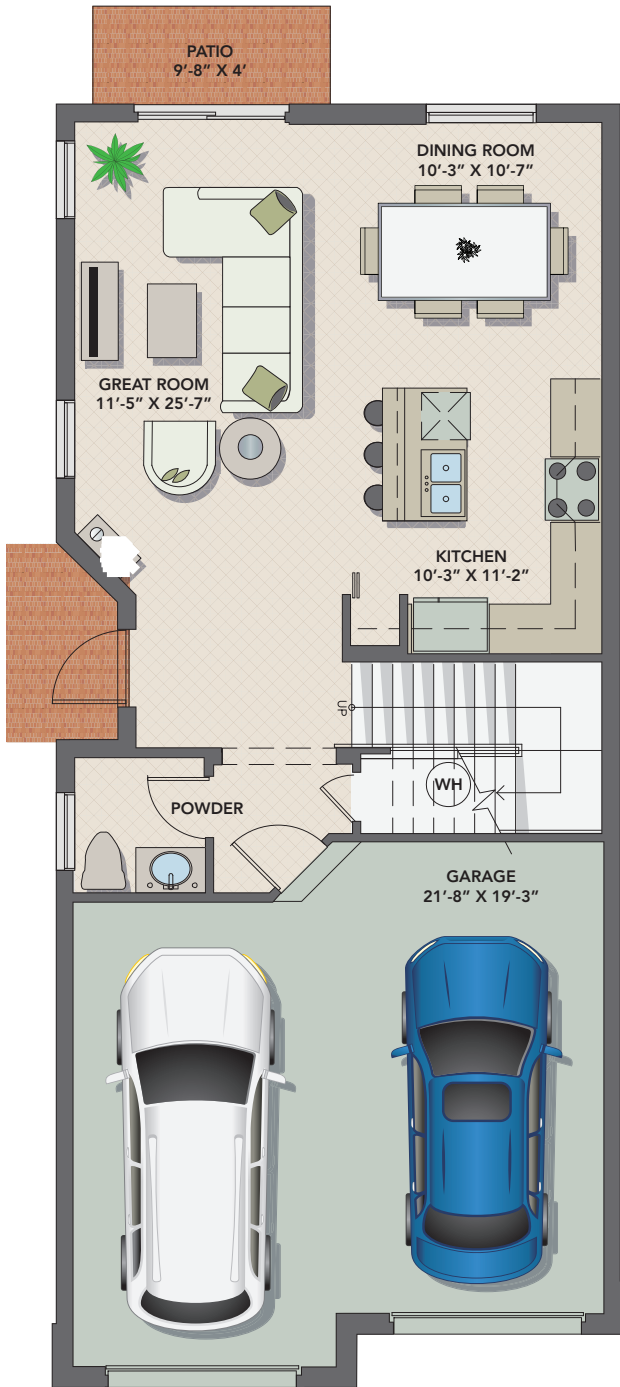
**THE
COSTA**

4 Bedrooms | 2.5 Baths | 2-Car Garage
1,818 A/C sq. ft. • 2,295 Total sq. ft.

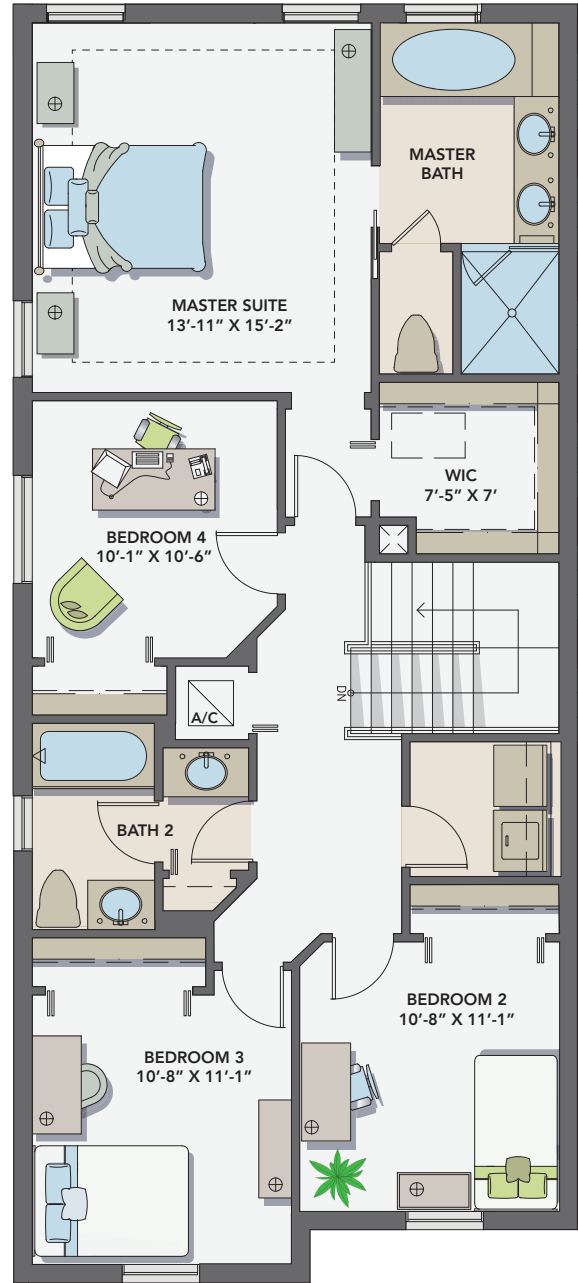


THE COSTA

4 Bedrooms | 2.5 Baths | 2-Car Garage
1,818 A/C sq. ft. • 2,295 Total sq. ft.



First Floor



Second Floor

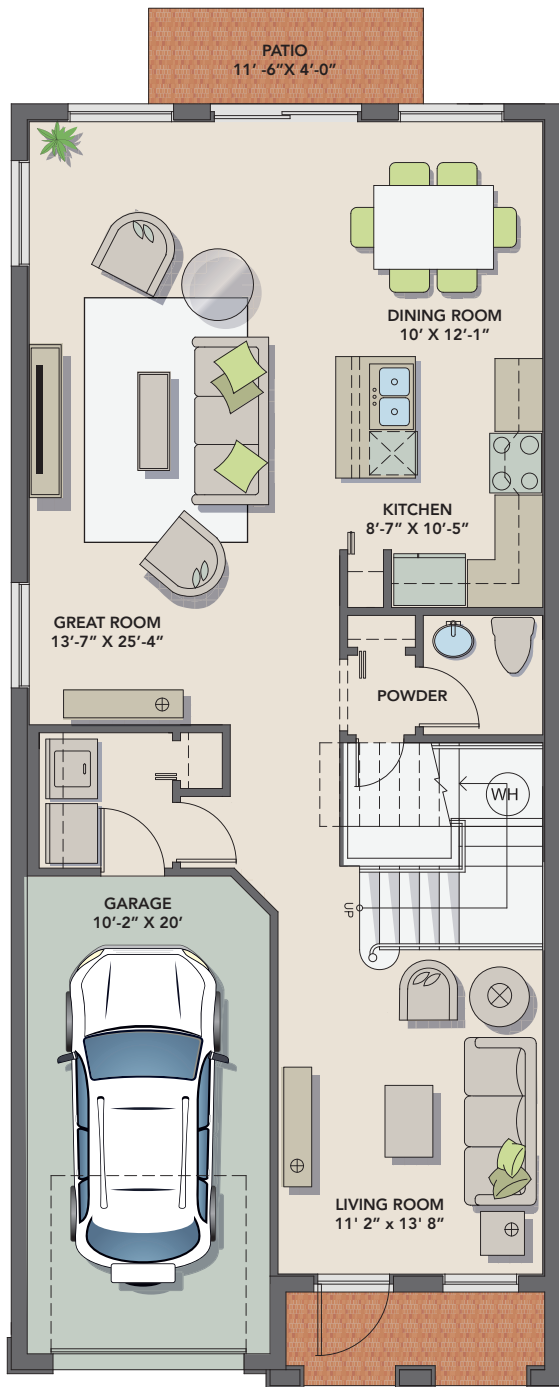
THE HAMPTON

4 Bedrooms | 2.5 Baths | 1-Car Garage
2,067 A/C sq. ft. • 2,320 Total sq. ft.

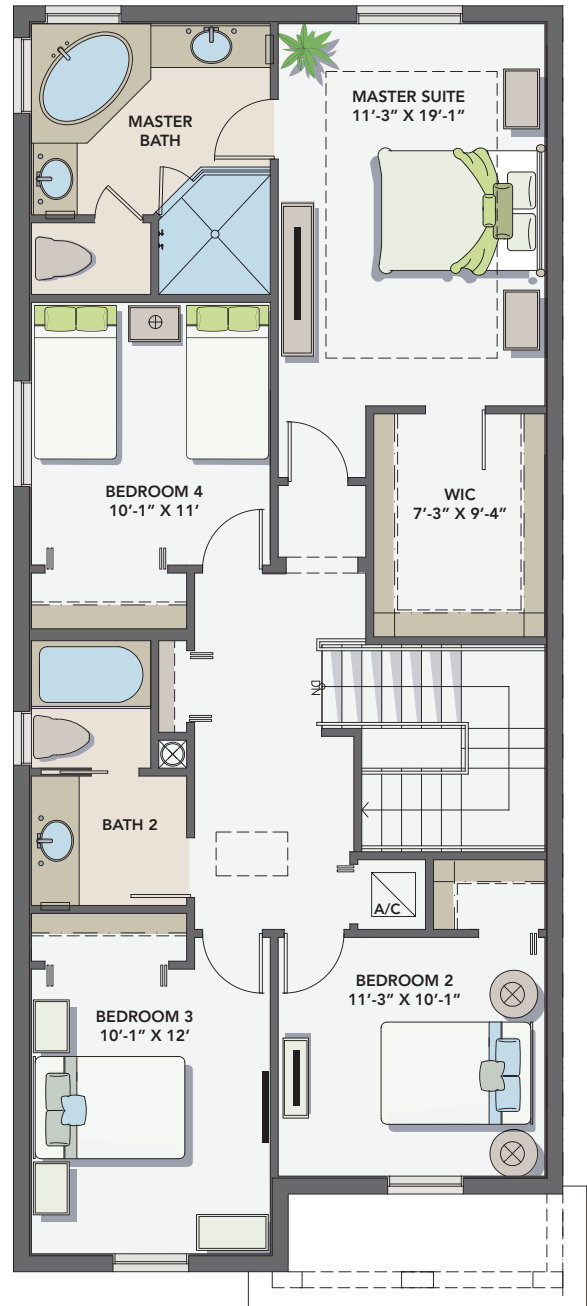


THE HAMPTON

4 Bedrooms | 2.5 Baths | 1-Car Garage
2,067 A/C sq. ft. • 2,320 Total sq. ft.



First Floor



Second Floor

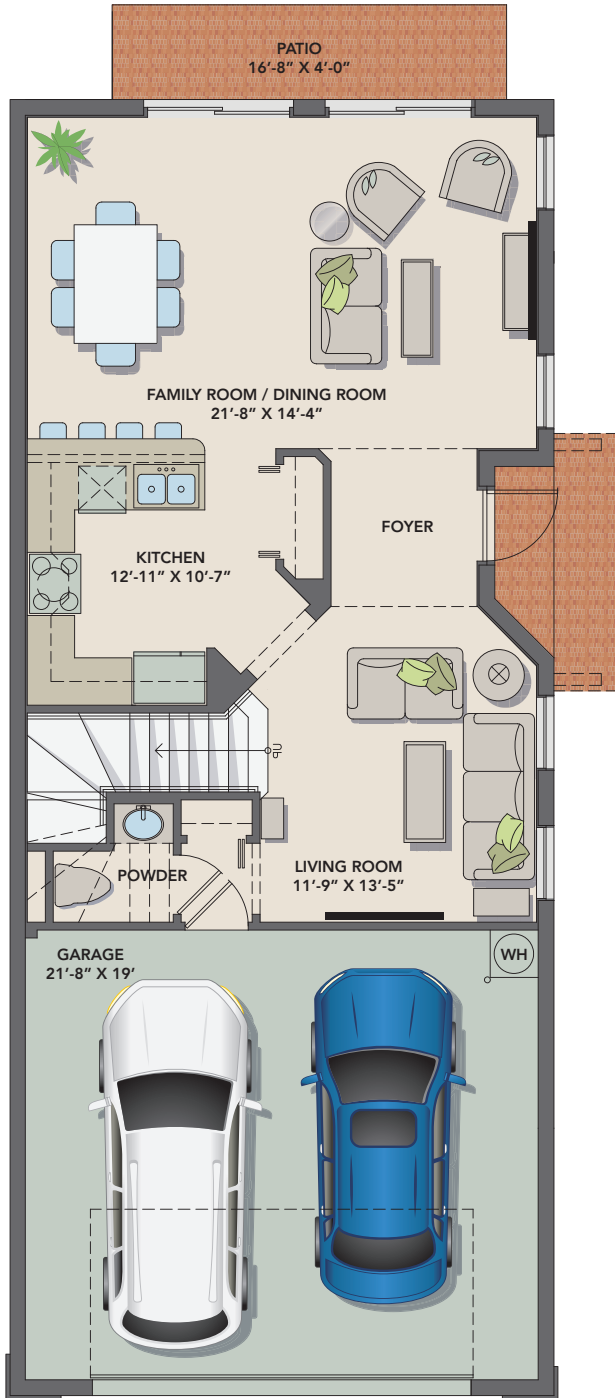
**THE
PACIFIC**

4 Bedrooms | 2.5 Baths | 2-Car Garage
2,067 A/C sq. ft. • 2,320 Total sq. ft.



THE PACIFIC

4 Bedrooms | 2.5 Baths | 2-Car Garage
1,984 A/C sq. ft. • 2,453 Total sq. ft.



First Floor



Second Floor

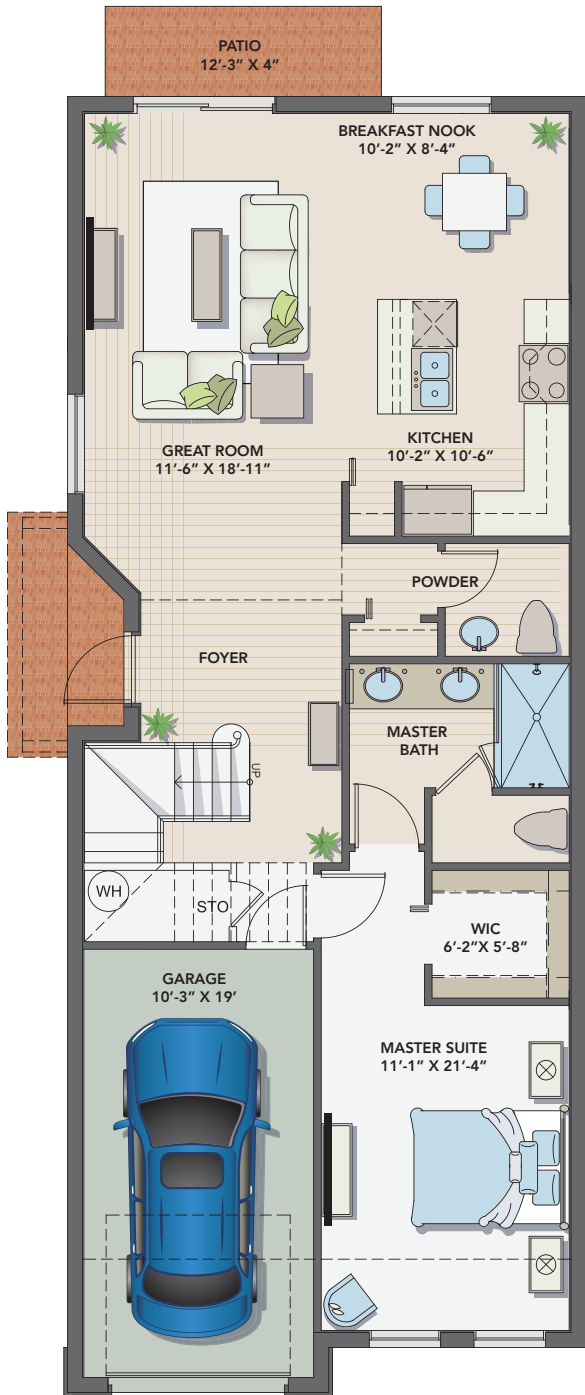
THE SEASIDE

4 Bedrooms | 3.5 Baths | 1-Car Garage
2,086 A/C sq. ft. • 2,348 Total sq. ft.

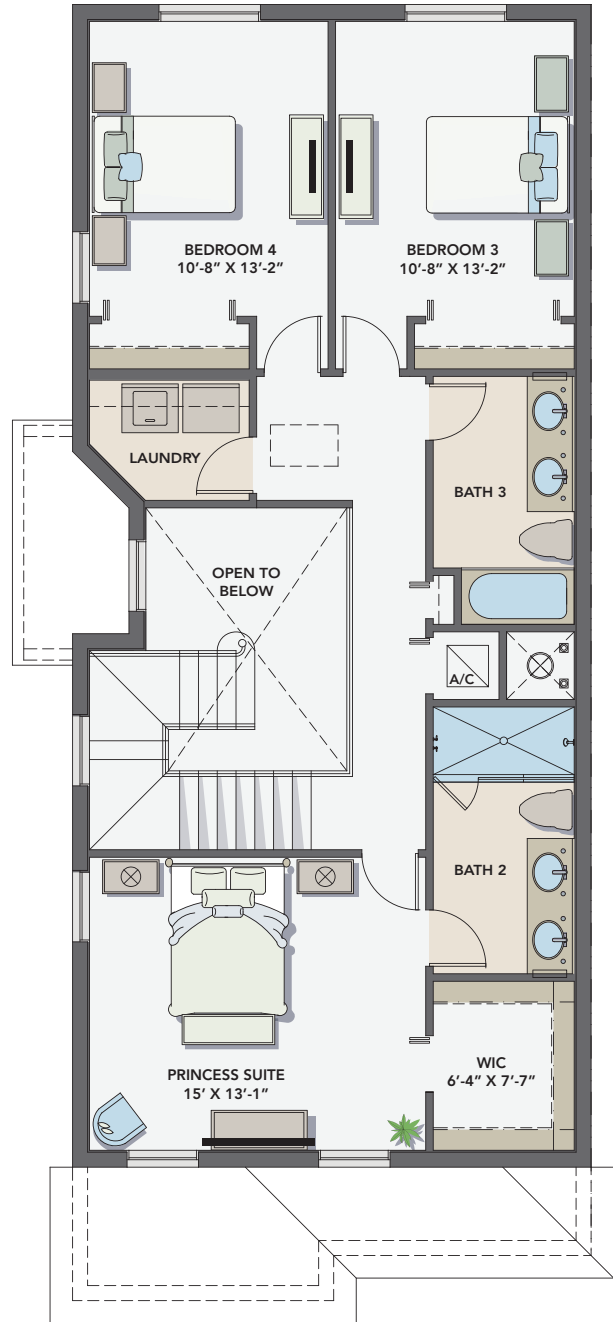


THE SEASIDE

4 Bedrooms | 3.5 Baths | 1-Car Garage
2,086 A/C sq. ft. • 2,348 Total sq. ft.



First Floor



Second Floor